

**KRT7 Antibody (N-term)**  
**Affinity Purified Rabbit Polyclonal Antibody (Pab)**  
**Catalog # AP14897a****Specification**

---

**KRT7 Antibody (N-term) - Product Information**

Application	IHC-P, WB,E
Primary Accession	<a href="#">P08729</a>
Other Accession	<a href="#">NP_005547.3</a>
Reactivity	Human
Host	Rabbit
Clonality	Polyclonal
Isotype	Rabbit IgG
Calculated MW	51386
Antigen Region	111-139

**KRT7 Antibody (N-term) - Additional Information****Gene ID** 3855**Other Names**

Keratin, type II cytoskeletal 7, Cytokeratin-7, CK-7, Keratin-7, K7, Sarcolectin, Type-II keratin Kb7, KRT7, SCL

**Target/Specificity**

This KRT7 antibody is generated from rabbits immunized with a KLH conjugated synthetic peptide between 111-139 amino acids from the N-terminal region of human KRT7.

**Dilution**

IHC-P~~1:10~50

WB~~1:1000

E~~Use at an assay dependent concentration.

**Format**

Purified polyclonal antibody supplied in PBS with 0.09% (W/V) sodium azide. This antibody is purified through a protein A column, followed by peptide affinity purification.

**Storage**

Maintain refrigerated at 2-8°C for up to 2 weeks. For long term storage store at -20°C in small aliquots to prevent freeze-thaw cycles.

**Precautions**

KRT7 Antibody (N-term) is for research use only and not for use in diagnostic or therapeutic procedures.

**KRT7 Antibody (N-term) - Protein Information****Name** KRT7

## Synonyms SCL

**Function** Blocks interferon-dependent interphase and stimulates DNA synthesis in cells. Involved in the translational regulation of the human papillomavirus type 16 E7 mRNA (HPV16 E7).

## Cellular Location

Cytoplasm.

## Tissue Location

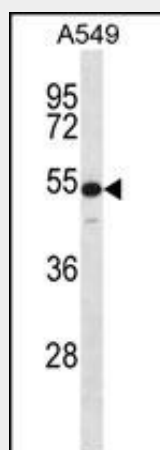
Expressed in cultured epidermal, bronchial and mesothelial cells but absent in colon, ectocervix and liver. Observed throughout the glandular cells in the junction between stomach and esophagus but is absent in the esophagus.

## KRT7 Antibody (N-term) - Protocols

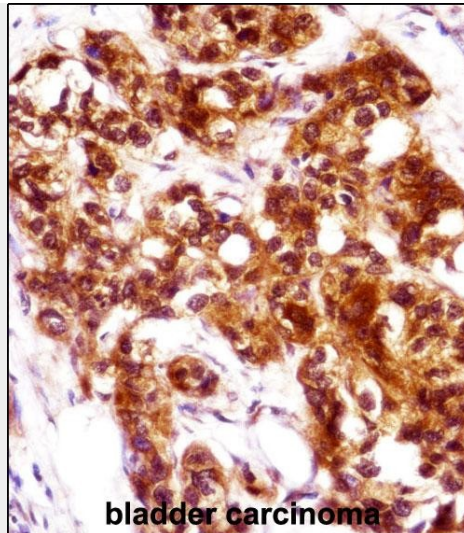
Provided below are standard protocols that you may find useful for product applications.

- [Western Blot](#)
- [Blocking Peptides](#)
- [Dot Blot](#)
- [Immunohistochemistry](#)
- [Immunofluorescence](#)
- [Immunoprecipitation](#)
- [Flow Cytometry](#)
- [Cell Culture](#)

## KRT7 Antibody (N-term) - Images



KRT7 Antibody (N-term) (Cat. #AP14897a) western blot analysis in A549 cell line lysates (35ug/lane). This demonstrates the KRT7 antibody detected the KRT7 protein (arrow).



KRT7 Antibody (N-term) (AP14897a) immunohistochemistry analysis in formalin fixed and paraffin embedded human bladder carcinoma followed by peroxidase conjugation of the secondary antibody and DAB staining. This data demonstrates the use of KRT7 Antibody (N-term) for immunohistochemistry. Clinical relevance has not been evaluated.

#### **KRT7 Antibody (N-term) - Background**

The protein encoded by this gene is a member of the keratin gene family. The type II cytokeratins consist of basic or neutral proteins which are arranged in pairs of heterotypic keratin chains coexpressed during differentiation of simple and stratified epithelial tissues. This type II cytokeratin is specifically expressed in the simple epithelia lining the cavities of the internal organs and in the gland ducts and blood vessels. The genes encoding the type II cytokeratins are clustered in a region of chromosome 12q12-q13. Alternative splicing may result in several transcript variants; however, not all variants have been fully described.

#### **KRT7 Antibody (N-term) - References**

Tsai, Y.Y., et al. Acta Derm. Venereol. 90(4):438-439(2010)  
Stewart, C.J., et al. Histopathology 57(1):46-54(2010)  
Nagashio, R., et al. Pathol. Int. 60(2):71-77(2010)  
Sano, M., et al. Int. J. Oncol. 36(2):321-330(2010)  
Park, S., et al. Pathology 41(7):640-644(2009)

#### **KRT7 Antibody (N-term) - Citations**

- [N-acetylglucosaminyltransferase V inhibits the invasion of trophoblast cells by attenuating MMP2/9 activity in early human pregnancy.](#)